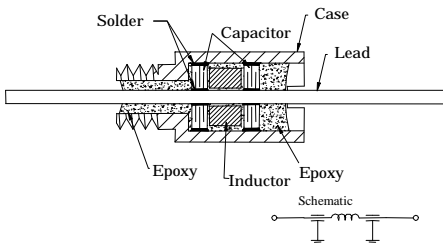


# MINI SCREW-IN

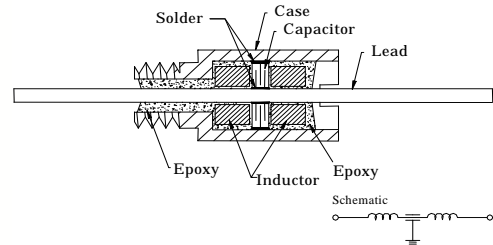
# EMI FILTERS "PI" AND "T" TYPE 5 AMP, EPOXY SEALED



Miniature Screw-In Pi-Section Filter



Miniature Screw-In T-Section Filter



## FEATURES:

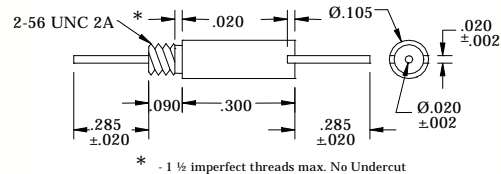
- Ideal for microwave applications
- Lower cost epoxy sealed
- Ultra miniature size
- High cap value per unit volume
- Gold or silver plating
- Steel Case

## ELECTRICAL SPECIFICATIONS

1. Operating Temperature Range: -55°C to + 125°C
2. Voltage Rating: 50, 100, 200 VDC
3. Temperature Coefficient Characteristic: NPO & X7R
4. Capacitance Range: <10pf to 18,000pf @ 50 VDC  
10pf to 5,000pf @ 100 VDC  
10pf to 2,500pf @ 200 VDC
5. DF: NPO 1% max. X7R 2.5% max.
6. DCR: .005 Ω max.

PA&E FILTER DIV PART NUMBER	WORKING VOLTAGE (VDC)	MIN CAP (pF)	MINIMUM INSERTION LOSS (dB) Per MIL-STD-220					
			1 MHz	10 MHz	100 MHz	200 MHz	1 GHz	10 GHz
Pi-SECTION MINI-BOLT								
2415-N2B5-183**	50	18000	9	24	60	70	70	70
2425-N2B5-103**	100	10000	5	15	55	70	70	70
2435-N2B5-502**	200	5000	-	10	48	65	70	70
2435-N2B5-252**	200	2500	-	8	42	58	70	70
NOTE: FOR .095 DIA. BODY SUBSTITUTE "P" FOR "N" IN THE PART NUMBER FOR .100 DIA. BODY SUBSTITUTE "M" FOR "N" IN THE PART NUMBER								
T-SECTION MINI-BOLT								
2515-N2B5-103**	50	10000	4	20	45	50	55	60
2525-N2B5-502**	100	5000	-	15	40	45	52	60
2535-N2B5-252**	200	2500	-	10	32	38	48	60
2535-N2B5-102**	200	1000	-	4	26	32	44	56
NOTE: FOR .095 DIA. BODY SUBSTITUTE "P" FOR "N" IN THE PART NUMBER FOR .100 DIA. BODY SUBSTITUTE "M" FOR "N" IN THE PART NUMBER								

Mini Screw-in Pi(or T)-Section Filter



Details subject to change without notice.

**\*\* PART NUMBERS ARE INCOMPLETE. PLEASE SEE PAGE 49 TO COMPLETE THE NUMBERS.**  
FOR GENERAL SPECIFICATIONS AND INSTALLATION GUIDE, PLEASE REFER TO PAGE 17