

# BOARD MOUNTABLE FILTER

FOR FURTHER INFORMATION, PLEASE CONTACT THE FACTORY.

**Materials:**  
 Body: Aluminum  
 Finish: Nickel  
 Leads/Ground Pins: Copper  
 Finish: Tin-Lead

Operating Temperature Range: -55°C to +125°C  
 Voltage Rating: 100 VDC  
 Current Rating: 20 ADC  
 Temperature Coefficient: X7R  
 Capacitance: .30uF minimum  
 Dissipation Factor: X7R 2.5 % maximum  
 DCR: .015 Ohm maximum

**Testing:** Level 'A' per PAE catalog  
 Capacitance  
 Dissipation Factor  
 Insulation Resistance:  
 2.5G-Ohm min @ 100VDC, 25°C  
 Dielectric Withstanding Voltage:  
 250 VDC for 5 second min.

**Tolerances:** ±.005 unless otherwise specified  
 ASME Y14-5M-1994

Dimensions: B = .850, .425, .050, .475, .100, .45, C, .1125, .225, 4xØ.057 Pin, Ø.010, C, B, A, M

Pin Designation:  
 Pin 1 IN, Pin 2 OUT, Pin 3 GND, Pin 4 GND

Ground Pin 2x

**Minimum Insertion Loss (dB) per MIL-STD-220 (15A Load)**

KHz	MHz	MHz	MHz	GHz	GHz
1	20	1	5	100	1
-	3	20	50	50	50

**Schematic**

**PACIFIC AEROSPACE & ELECTRONICS, INC.**  
 U.S. Electronics Group 434 Olds Station Road (509) 665-6500  
 Filter Division Wenatchee WA 98801 (509) 665-2373

APPROVED BY: \_\_\_\_\_  
 SCALE: NTS  
 DATE: 6/11/02

DRAWN BY: EP  
 REVISION: F

**Filter; Board mountable, Pi-section**

OUTLINE DRAWING: 4428-0005-300AXI  
 DRAWING NUMBER

This is a non polarized device. Pins 1 and 2 may be reversed without affecting the device.  
 Alternate part configuration available upon request. Contact factory for assistance.

# BOARD MOUNTABLE FILTER

**FOR FURTHER INFORMATION, PLEASE CONTACT THE FACTORY.**

**SPECIFICATIONS:**

**Mechanical:**  
 Case Material: Aluminum; 6061  
 Case Finish: Tin-Lead over Nickel underplate  
 Lead Material: Copper, Magnet wire  
 Lead Finish: Solder Coating  
 Tolerances: ±.010 Unless noted otherwise  
 Mounting Torque: 2.5 in. lbs. Maximum

**Electrical:**  
 Operating Temperature Range: -55°C to +125°C  
 Rated Voltage: 400VDC / 230VAC, 400Hz  
 Rated Current: 5 Amperes  
 Insulation Resistance: 1000M Ohm minimum @ 25°C  
 Dielectric Withstanding Voltage: 1000 VDC for 5-60 seconds  
 Capacitance: .20 uF (+100%/-0%)  
 Dissipation Factor: 3.0% Maximum  
 DC Resistance: .013 Ohms Max.

**Testing:**  
 Per 84084-015TB Specification

**Other configurations available upon request. Contact factory for assistance**

Insertion Loss (dB)	
300KHz-10MHz @ 5 amp load	1GHz
300KHz	10MHz
12dB	50dB
	80dB
	80dB

**PACIFIC AEROSPACE & ELECTRONICS, INC.**  
 U.S. Electronics Group  
 Filter Division  
 434 Olds Station Road  
 Wenatchee WA 98801  
 (509) 665-6500  
 (509) 662-2373

SCALE: NTS  
 DATE: 6/11/02  
 DRAWN BY: EP  
 REVISION: C

**Filter; Board mountable, Pi-section**

OUTLINE DRAWING: 4455-0P05-300VH

# BOARD MOUNTABLE FILTER

**FOR FURTHER INFORMATION, PLEASE CONTACT THE FACTORY.**

**SPECIFICATIONS:**

**Mechanical:**

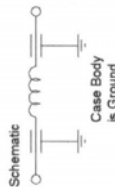
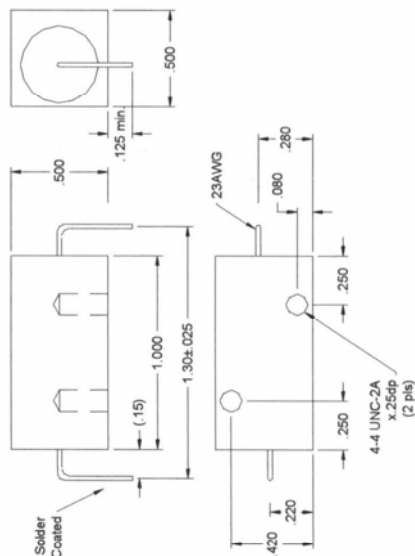
- Case Material:** Aluminum; 6061
- Case Finish:** Tin-Lead over Nickel underplate
- Lead Material:** Copper, Magnet wire
- Lead Finish:** Solder Coating over Silver Plating over Nickel underplate
- Tolerances:** ±.010 Unless noted otherwise
- Mounting Torque:** 2.5 in. lbs. Maximum

**Electrical:**

- Operating Temperature Range:** -55°C to +125°C
- Rated Voltage:** 400VDC
- Rated Current:** 5 Amperes
- Insulation Resistance:** 1000M Ohm minimum @ 25°C
- Dielectric Withstanding Voltage:** 1000 VDC for 5-60 seconds
- Capacitance:** .20 uF (+100%/-0%)
- Dissipation Factor:** 3.0% Maximum
- DC Resistance:** .016 Ohms Max.

**Testing:**

- Group A and B inspection of MIL-PRF-28861 Class B for a non-hermetic device.**
- except Voltage Conditioning to be at 1.5x rated voltage**
- Group A to include a one-time 1500VDC Flash test**



Alternate configurations available upon request. Contact factory for assistance.



**PACIFIC AEROSPACE & ELECTRONICS, INC.**

**U.S. Electronics Group**  
Filter Division  
434 Olds Station Road  
Wenatchee WA 98801  
(509) 665-6500  
(509) 662-2373

SCALE: NTS  
DATE: 6/11/02  
DRAWN BY: EP  
REVISION: C

## Filter; Board mountable, Pi-Section

OUTLINE DRAWING: 4485-0P05-300VH

		Insertion Loss (dB)	
300KHz	12dB	300KHz-10MHz @ 5 amp load	1GHz
1MHz	50dB	10MHz	80dB
50dB	80dB	100MHz	80dB
80dB	80dB		