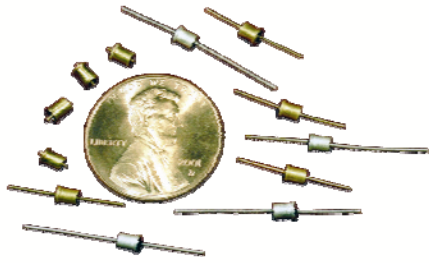
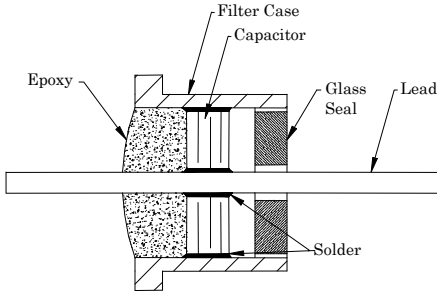


# MINI EYELET



Hermetic Seal Eyelet C-Section Filter



## ELECTRICAL SPECIFICATIONS

1. Operating Temperature Range: -55°C to + 125°C
2. Voltage Rating: 50, 100, 200 VDC
3. Temperature Coefficient Characteristic: NPO & X7R
4. Capacitance Range: <10pf to 15,000pf @ 50 VDC  
<10pf to 5,000pf @ 100 VDC  
<10pf to 2,500pf @ 200 VDC
5. DF: NPO 1% max. X7R 2.5% max.
6. DCR: .005 Ω max.

PA&E FILTERS PART NUMBER	WORKING VOLTAGE (VDC)	MIN CAP (pF)	MINIMUM INSERTION LOSS (dB) Per MIL-STD-220					
			1 MHz	10 MHz	100 MHz	200 MHz	1 GHz	10 GHz
<b>C-SECTION MINI-EYELET</b>								
1119-R115-103**	50	10000	4	20	35	40	50	60
1129-R115-502**	100	5000	-	15	30	35	50	60
1139-R115-252**	200	2500	-	10	25	30	45	60
1139-R115-102**	200	1000	-	4	20	25	40	55
<b>L-SECTION MINI-EYELET</b>								
1219-R115-103**	50	10000	4	20	37	42	53	60
1229-R115-502**	100	5000	-	15	32	36	50	60
1139-R115-252**	200	2500	-	10	26	31	45	60
1139-R115-102**	200	1000	-	4	20	26	40	55

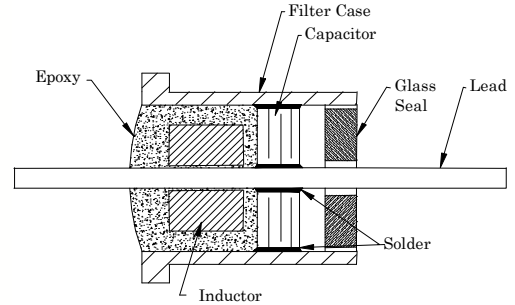
Details subject to change without notice.

**\*\* PART NUMBERS ARE INCOMPLETE. PLEASE SEE PAGE 49 TO COMPLETE THE NUMBERS.**

FOR GENERAL SPECIFICATIONS AND INSTALLATION GUIDE, PLEASE REFER TO PAGE 8

# EMI FILTERS “C” AND “L” TYPE, 2 AMP GLASS SEAL ONE END

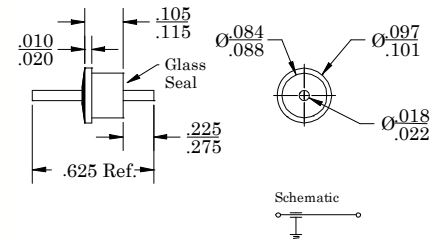
Hermetic Seal Eyelet L-Section Filter



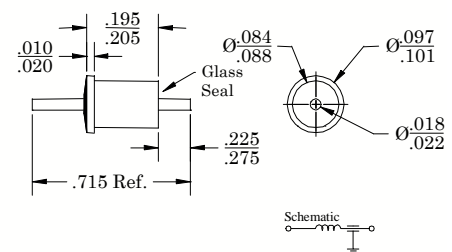
## FEATURES:

- Ideal for microwave applications
- Hermetically sealed at one end
- Ultra miniature size
- High cap value per unit volume
- Gold or silver plating
- Steel Case

**C-SECTION FILTER – Solder Mount**



**L-SECTION FILTER – Solder Mount**

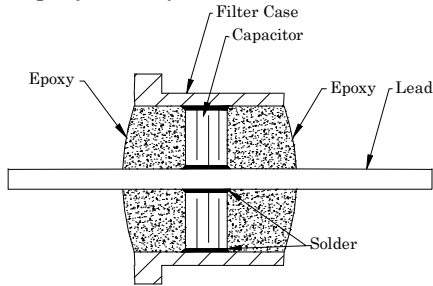


# EMI FILTERS

## “C” AND “L” TYPE, 5 AMP

### EPOXY SEALED

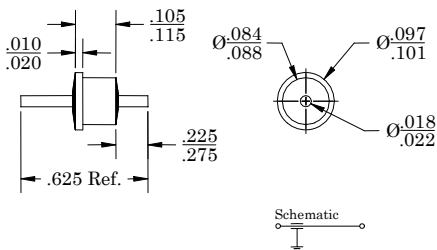
Epoxy Seal Eyelet C-Section Filter



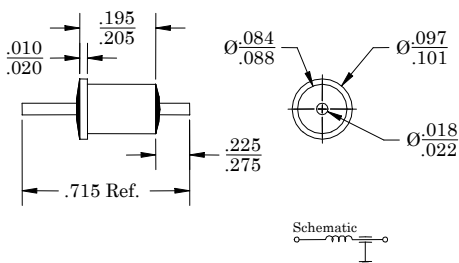
#### FEATURES:

- Ideal for microwave applications
- Lower cost epoxy sealed
- Ultra miniature size
- High cap value per unit volume
- Gold or silver plating
- Steel Case

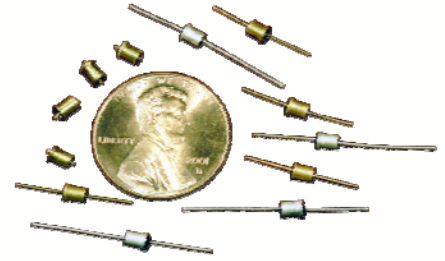
#### C-SECTION FILTER – SOLDER IN



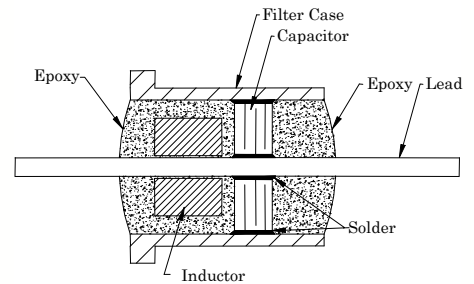
#### L-SECTION FILTER – SOLDER IN



# MINI EYELET



Epoxy Seal Eyelet L-Section Filter



#### ELECTRICAL SPECIFICATIONS

1. Operating Temperature Range: -55°C to + 125°C
2. Voltage Rating: 50, 100, 200 VDC
3. Temperature Coefficient Characteristic: NPO & X7R
4. Capacitance Range: <10pf to 15,000pf @ 50 VDC  
<10pf to 5,000pf @ 100 VDC  
<10pf to 2,500pf @ 200 VDC
5. DF: NPO 1% max. X7R 2.5% max.
6. DCR: .005 Ω max.

PA&E FILTER DIV PART NUMBER	WORKING VOLTAGE (VDC)	MIN CAP (pF)	MINIMUM INSERTION LOSS (dB) Per MIL-STD-220					
			1 MHz	10 MHz	100 MHz	200 MHz	1 GHz	10 GHz
C-SECTION MINI-EYELET								
8115-R115-103**	50	10000	4	20	35	40	50	60
8125-R115-502**	100	5000	-	15	30	35	50	60
8135-R115-252**	200	2500	-	10	25	30	45	60
8135-R115-102**	200	1000	-	4	20	25	40	55
L-SECTION MINI-EYELET								
8215-R115-103**	50	10000	4	20	37	42	53	60
8225-R115-502**	100	5000	-	15	32	36	50	60
8135-R115-252**	200	2500	-	10	26	31	45	60
8135-R115-102**	200	1000	-	4	20	26	40	55

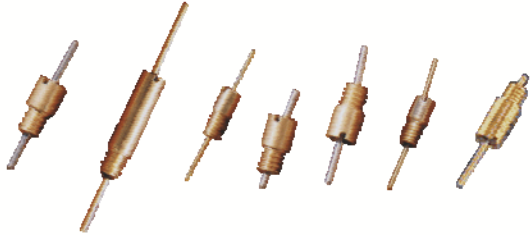
Details subject to change without notice.

**\*\* PART NUMBERS ARE INCOMPLETE. PLEASE SEE PAGE 49 TO COMPLETE THE NUMBERS.**

FOR GENERAL SPECIFICATIONS AND INSTALLATION GUIDE, PLEASE REFER TO PAGE 8

# MICRO SCREW-IN

# EMI FILTERS “C” AND “L” TYPE, 1 AMP EPOXY SEALED



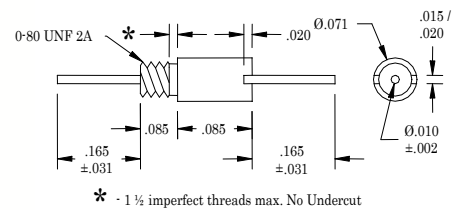
## FEATURES:

- Ideal for microwave applications
- Epoxy sealed C or L style filters
- Ultra miniature size
- High cap value per unit volume
- Gold or silver plating
- Steel Case

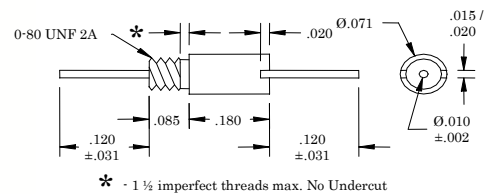
## ELECTRICAL SPECIFICATIONS

1. Operating Temperature Range: -55°C to + 125°C
2. Voltage Rating: 50, 100, 200 VDC
3. Temperature Coefficient Characteristic: NPO & X7R
4. Capacitance Range: <10pf to 4,000pf @ 50 VDC  
<10pf to 1,000pf @ 100 VDC  
<10pf to 250pf @ 200 VDC
5. DF: NPO 1% max. X7R 2.5% max.
6. DCR: .010 Ω max.

### Micro Screw-in C-Section



### Micro Screw-in L-Section



PA&E FILTER DIV PART NUMBER	WORKING VOLTAGE (VDC)	MIN CAP (pF)	MINIMUM INSERTION LOSS (dB) Per MIL-STD-220					
			1 MHz	10 MHz	100 MHz	200 MHz	1 GHz	10 GHz
C-SECTION MINI-BOLT								
2113-D2A5-402**	50	4000	-	14	28	33	48	60
2123-D2A5-102**	100	1000	-	4	20	26	40	55
2133-D2A5-251**	200	250	-	-	10	15	28	48
L-SECTION MINI-BOLT								
2213-D2A5-402**	50	4000	-	14	28	33	48	60
2223-D2A5-102**	100	1000	-	4	20	26	40	55
2233-D2A5-251**	200	250	-	-	10	15	28	48

10GHz is guaranteed but not tested

Details subject to change without notice.

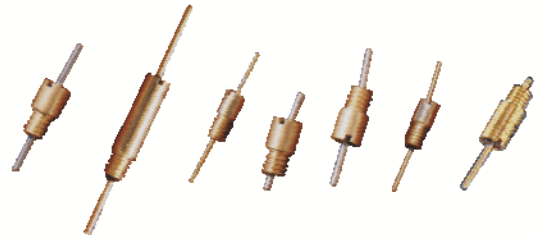
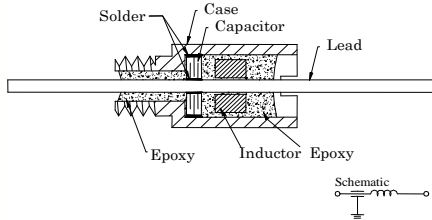
**\*\* PART NUMBERS ARE INCOMPLETE. PLEASE SEE PAGE 49 TO COMPLETE THE NUMBERS.**

FOR GENERAL SPECIFICATIONS AND INSTALLATION GUIDE, PLEASE REFER TO PAGE 17

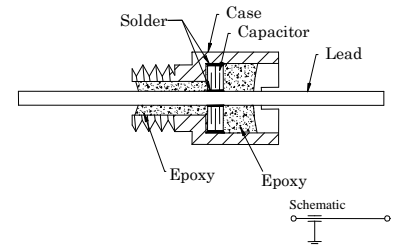
# EMI FILTERS "C" AND "L" TYPE, 5 AMP EPOXY SEALED

# MINI SCREW-IN

Miniature Screw-In L-Section Filter



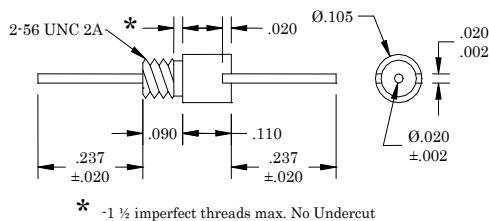
Miniature Screw-In C-Section Filter



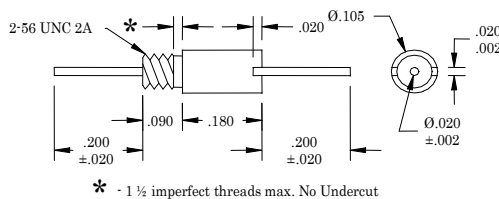
## FEATURES:

- Ideal for microwave applications
- Epoxy sealed C or L style filters
- Ultra miniature size
- High cap value per unit volume
- Gold or silver plating
- Steel Case

Mini Screw-in C-Section Filter



Mini Screw-in L-Section Filter



## ELECTRICAL SPECIFICATIONS

1. Operating Temperature Range: -55°C to +125°C
2. Voltage Rating: 50, 100, 200 VDC
3. Temperature Coefficient Characteristic: NPO & X7R
4. Capacitance Range: <10pf to 15,000pf @ 50 VDC  
<10pf to 5,000pf @ 100 VDC  
<10pf to 2,500pf @ 200 VDC
5. DF: NPO 1% max. X7R 2.5% max.
6. DCR: .005 Ω max.

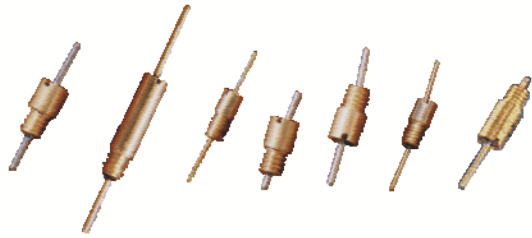
PA&E FILTER DIV PART NUMBER	WORKING VOLTAGE (VDC)	MIN CAP (pF)	MINIMUM INSERTION LOSS (dB) Per MIL-STD-220					
			1 MHz	10 MHz	100 MHz	200 MHz	1 GHz	10 GHz
C-SECTION MINI-BOLT								
2115-N2B5-103**	50	10000	4	20	35	40	50	60
2125-N2B5-502**	100	5000	-	15	30	35	50	60
2135-N2B5-252**	200	2500	-	10	25	30	45	60
2135-N2B5-102**	200	1000	-	4	20	25	40	55
NOTE: FOR .095 DIA. BODY SUBSTITUTE "P" FOR "N" IN THE PART NUMBER FOR .100 DIA. BODY SUBSTITUTE "M" FOR "N" IN THE PART NUMBER								
L-SECTION MINI-BOLT								
2315-N2B5-103**	50	10000	4	20	37	42	53	60
2325-N2B5-502**	100	5000	-	15	32	36	50	60
2335-N2B5-252**	200	2500	-	10	26	31	45	60
2335-N2B5-102**	200	1000	-	4	20	26	40	55
NOTE: FOR .095 DIA. BODY SUBSTITUTE "P" FOR "N" IN THE PART NUMBER FOR .100 DIA. BODY SUBSTITUTE "M" FOR "N" IN THE PART NUMBER FOR L1 CIRCUIT SUBSTITUTE 2 FOR 3 IN THE SECOND DIGIT OF THE PART NUMBER								

Details subject to change without notice.

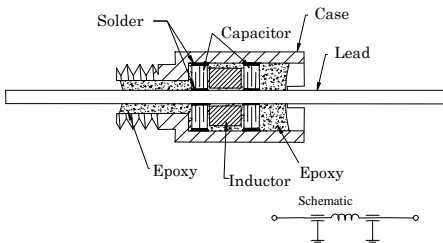
**\*\* PART NUMBERS ARE INCOMPLETE. PLEASE SEE PAGE 49 TO COMPLETE THE NUMBERS.**

FOR GENERAL SPECIFICATIONS AND INSTALLATION GUIDE, PLEASE REFER TO PAGE 17

# MINI SCREW-IN



Miniature Screw-In Pi-Section Filter



## ELECTRICAL SPECIFICATIONS

1. Operating Temperature Range: -55°C to + 125°C
2. Voltage Rating: 50, 100, 200 VDC
3. Temperature Coefficient Characteristic: NPO & X7R
4. Capacitance Range: <10pf to 18,000pf @ 50 VDC  
10pf to 5,000pf @ 100 VDC  
10pf to 2,500pf @ 200 VDC
5. DF: NPO 1% max. X7R 2.5% max.
6. DCR: .005 Ω max.

PA&E FILTER DIV PART NUMBER	WORKING VOLTAGE (VDC)	MIN CAP (pF)	MINIMUM INSERTION LOSS (dB) Per MIL-STD-220					
			1 MHz	10 MHz	100 MHz	200 MHz	1 GHz	10 GHz
<b>PI-SECTION MINI-BOLT</b>								
2415-N2B5-183**	50	18000	9	24	60	70	70	70
2425-N2B5-103**	100	10000	5	15	55	70	70	70
2435-N2B5-502**	200	5000	-	10	48	65	70	70
2435-N2B5-252**	200	2500	-	8	42	58	70	70
NOTE: FOR .095 DIA. BODY SUBSTITUTE "P" FOR "N" IN THE PART NUMBER FOR .100 DIA. BODY SUBSTITUTE "M" FOR "N" IN THE PART NUMBER								
<b>T-SECTION MINI-BOLT</b>								
2515-N2B5-103**	50	10000	4	20	45	50	55	60
2525-N2B5-502**	100	5000	-	15	40	45	52	60
2535-N2B5-252**	200	2500	-	10	32	38	48	60
2535-N2B5-102**	200	1000	-	4	26	32	44	56
NOTE: FOR .095 DIA. BODY SUBSTITUTE "P" FOR "N" IN THE PART NUMBER FOR .100 DIA. BODY SUBSTITUTE "M" FOR "N" IN THE PART NUMBER								

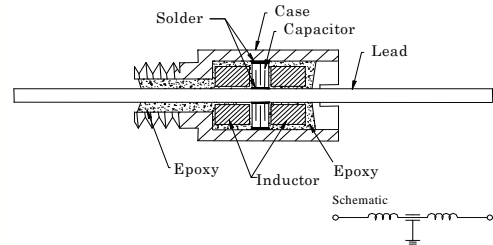
Details subject to change without notice.

**\*\* PART NUMBERS ARE INCOMPLETE. PLEASE SEE PAGE 49 TO COMPLETE THE NUMBERS.**

FOR GENERAL SPECIFICATIONS AND INSTALLATION GUIDE, PLEASE REFER TO PAGE 17

# EMI FILTERS "PI" AND "T" TYPE 5 AMP, EPOXY SEALED

Miniature Screw-In T-Section Filter



## FEATURES:

- Ideal for microwave applications
- Lower cost epoxy sealed
- Ultra miniature size
- High cap value per unit volume
- Gold or silver plating
- Steel Case

Mini Screw-in Pi(or T)-Section Filter

