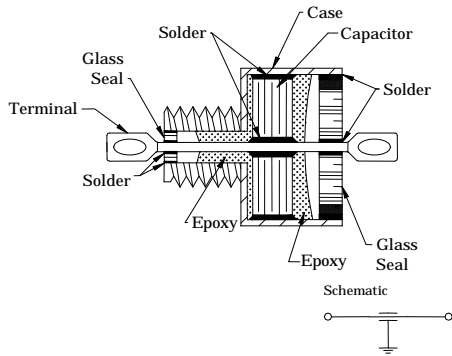


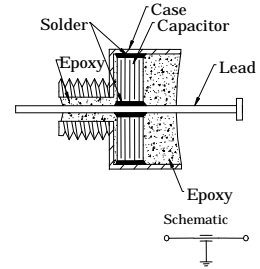
EMI FILTERS "C" TYPE

BROADBAND

Hermetic C-Section Broadband Filter



Potted C-Section Broadband



FEATURES:

- QPL to MIL-F-28861/1.
- Fully environmentally protected.
- Thread bushing intended for bulkhead mounting.
- Solder coated terminals.
- High capacitance values for excellent insertion loss.
- Tin-lead, silver, or gold plating.

APPLICATIONS:

Lower cut-off frequency requirements along with higher voltage ratings dictate the use of relatively larger size broadband style filters. The high density monolithic multilayer discoidal capacitor is the basic element in PA&E's broadband "C" type feed-thru's. All parts listed throughout this section of the catalog utilize exclusively, ceramic material with dielectric constant (K) of 1700 and temperature characteristic of X7R or BX. A "C" section is the simple single element feed-thru filter suitable for applications in which source and load impedances are relatively high and moderate insertion loss curve slope of 20 dB / decade is satisfactory. Although the series inductance of this three terminal device is minimized due to its mechanical configuration, resonant dips are to be expected between 10-50 MHz, depending on the size and capacitance values. It should be noted that at increasing capacitance the cut-off frequency (3dB point) decreases and insertion loss gradient is not affected.

