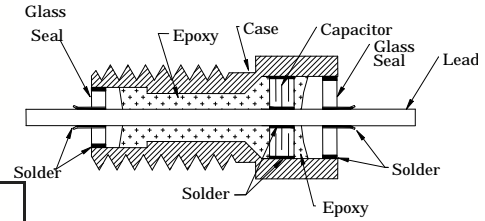


# BOLT

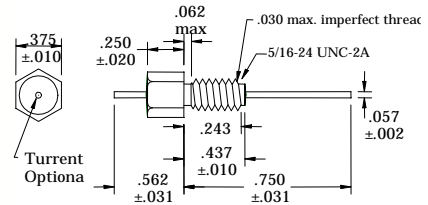
# EMI FILTERS

## "C", "L", AND "PI" TYPE 5/16-24 THREAD, 25 AMP

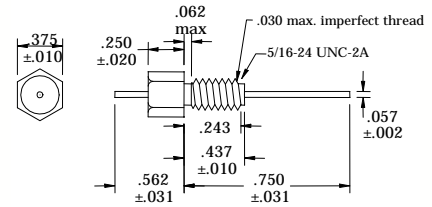


FILTER DIVISION PART NUMBER	WORKING VOLTAGE (VDC)	MIN CAP μF	MINIMUM INSERTION LOSS (dB) Per MIL-STD-220						
			300 KHz	1 MHz	10 MHz	100 MHz	200 MHz	1 GHz	10 GHz
FILTER CIRCUIT "C" SCHEMATIC									
211Z-528*-125**	50	1.2	31	40	50	70	70	70	70
212Z-528*-105**	70	1.0	30	40	48	70	70	70	70
212Z-528*-754**	100	.75	28	38	45	64	70	70	70
212Z-528*-504**	100	.5	23	34	42	60	65	70	70
213Z-528*-254**	200	.25	16	29	40	55	60	70	70
214Z-528*-154**	125VAC	.15	14	23	39	50	57	70	70
216Z-528*-104**	300	.1	13	20	38	48	55	70	70
218Z-528*-503**	500	.05	3	15	35	44	50	70	70
FILTER CIRCUIT "L" SCHEMATIC									
221Z-528*-125**	50	1.2	31	40	50	70	70	70	70
222Z-528*-105**	70	1.0	30	40	48	70	70	70	70
222Z-528*-754**	100	.75	28	38	45	70	70	70	70
223Z-528*-504**	100	.5	23	34	44	65	70	70	70
223Z-528*-254**	200	.25	16	29	42	60	70	70	70
224Z-528*-154**	125VAC	.15	14	23	40	58	65	70	70
226Z-528*-104**	300	.1	13	20	40	56	65	70	70
228Z-528*-503**	500	.05	3	15	36	54	60	70	70
FILTER CIRCUIT "PI" SCHEMATIC									
242Z-528*-504**	100	.5	23	34	44	70	70	70	70
242Z-528*-254**	100	.25	18	25	42	70	70	70	70
243Z-528*-104**	200	.1	14	20	40	70	70	70	70
244Z-528*-503**	125VAC	.05	3	15	36	70	70	70	70
244Z-528*-223**	125VAC	.022	-	10	26	68	70	70	70
245Z-528*-203**	240VAC	.02	-	8	24	66	70	70	70
248Z-528*-123**	500	.012	-	-	16	65	70	70	70
245Z-528*-602**	240VAC	.006	-	-	15	54	68	70	70

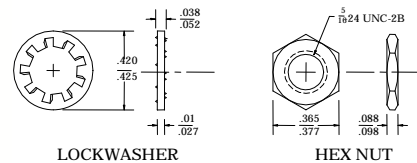
Epoxy Sealed 5/16-24 Bolt Style



Hermetic Sealed 5/16-24 Bolt Style



MOUNTING HARDWARE



\*NOTE: For hermetically sealed parts, insert 1 and for epoxy sealed parts insert 5 for straight lead.

Tolerances : ± .005 and as noted.

Details subject to change without notice.

\*\* PART NUMBERS ARE INCOMPLETE. PLEASE SEE PAGE 49 TO COMPLETE THE NUMBERS.