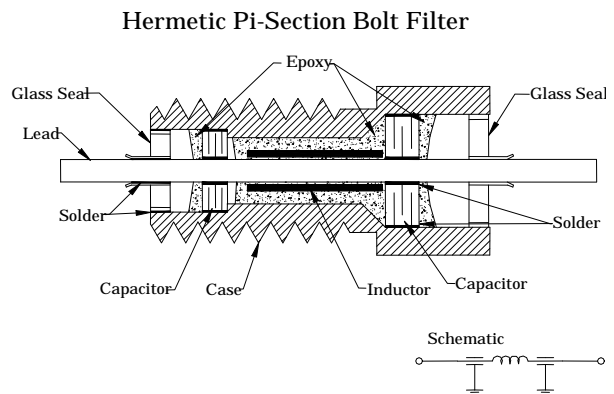
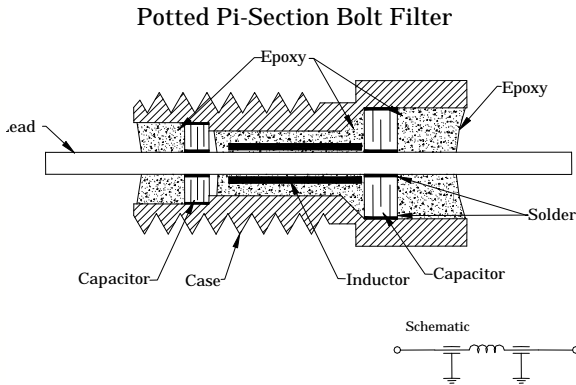


BOLT

EMI FILTERS "C", "L", AND "PI" TYPE



FEATURES:

- Equivalent to MIL-F-28861/6 through 10.
- Epoxy and hermetically sealed versions.
- Industry standard sizes.
- Thread sizes ranging from 4-40 UNC to 5/16-24 UNF.
- Extraordinary volumetric efficiency.
- Highly reliable multilayer capacitor construction.

APPLICATIONS:

Probably the most popular and widely used, the bolt style filter features C, L, or PI type circuits in a variety of mechanical sizes, a wide range of capacitance values and ease of installation. All of PA&E's bolt style filters, regardless of circuit type, utilize monolithic discoidal ceramic capacitor construction in accordance with MIL-F-28861. Although with this design, the capacitors are located away from the region of torque related stress and are mechanically isolated from each other, the maximum recommended torque for each thread size should be carefully observed during the installation process. PA&E offers hermetically sealed versions for military and aerospace applications where harsh environmental conditions exist. Source and load impedances of the system and attenuation gradient required will determine the style of the filter. The rule of thumb is to have a capacitor inside the filter facing the high impedance and an inductor looking at the low impedance. This impedance mismatch will produce the best insertion loss results.

