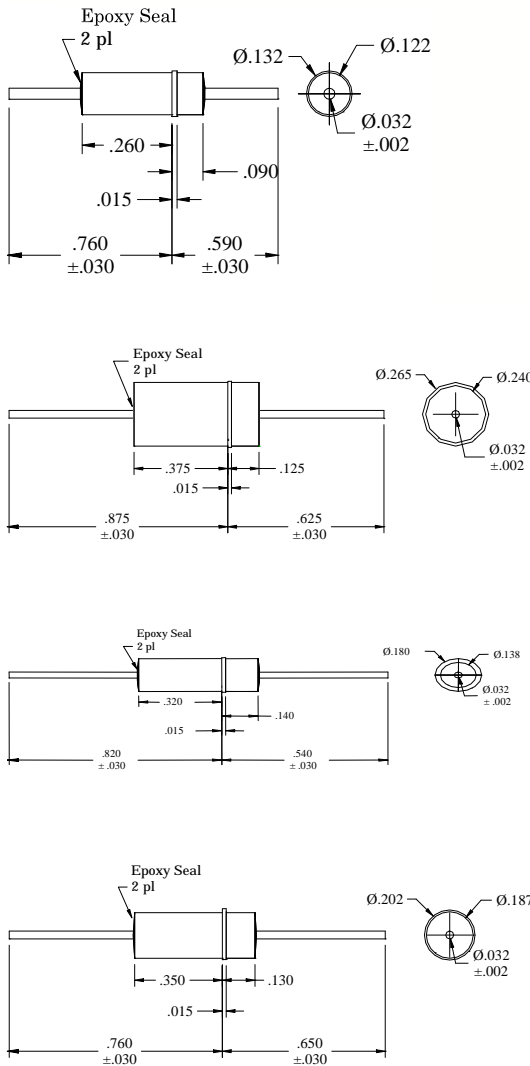
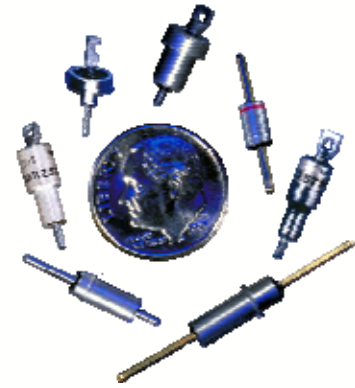
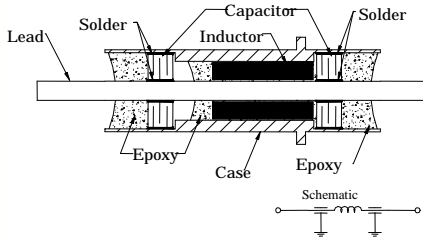


EMI FILTERS

"PI" TYPE, 10 AMP, SOLDER MOUNT, EPOXY SEALED

FILTER PIN

Filter Pin - Pi-Section, Solder Mount, Epoxy



FILTER DIVISION PART NUMBER	WORKING VOLTAGE (VDC)	MIN CAP μ F	MINIMUM INSERTION LOSS (dB) Per MIL-STD-220					
			1 MHz	10 MHz	100 MHz	200 MHz	1 GHz	10 GHz
6416-VS95-503**	50	.05	15	36	70	70	70	70
6416-VS95-363**	50	.036	12	30	65	70	70	70
6424-VS95-223**	100	.022	8	26	65	70	70	70
6426-VS95-153**	100	.015	-	20	60	70	70	70
6436-VS95-103**	200	.01	-	15	55	70	70	70
6436-VS95-502**	200	.005	-	10	48	65	70	70
6416-XE95-104**	50	.1	20	70	70	70	70	70
6416-XE95-503**	50	.05	15	36	70	70	70	70
6426-XE95-363**	100	.036	12	30	65	70	70	70
6426-XE95-223**	100	.022	8	26	65	70	70	70
6436-XE95-153**	200	.015	-	20	60	70	70	70
6436-XE95-103**	200	.01	-	15	55	70	70	70
6416-YT95-204**	50	.2	25	42	70	70	70	70
6426-YT95-104**	100	.1	20	40	70	70	70	70
6436-YT95-503**	200	.05	15	36	70	70	70	70
6436-YT95-363**	200	.036	12	30	65	70	70	70
6466-YT95-223**	300	.022	8	26	65	70	70	70
6466-YT95-103**	300	.01	-	15	55	70	70	70
6416-ZF95-504**	50	.5	34	44	70	70	70	70
6426-ZF95-204**	100	.2	25	42	70	70	70	70
6436-ZF95-104**	200	.1	20	40	70	70	70	70
6466-ZF95-503**	300	.05	15	36	70	70	70	70
6466-ZF95-363**	300	.036	12	30	65	70	70	70
6466-ZF95-223**	300	.022	8	26	65	70	70	70

NOTE: .025 square lead available upon request.

Tolerances: \pm .010 and as noted.

Details subject to change without notice.

** PART NUMBERS ARE INCOMPLETE. PLEASE SEE PAGE 49 TO COMPLETE THE NUMBERS.