

# EYELET



# EMI FILTERS "C" AND "L" TYPE .400 OD, 15 AMP

Hermetic Seal Eyelet C-Section Filter

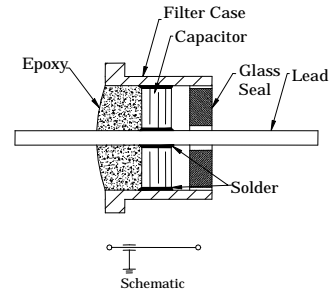


FIGURE 7

**C-SECTION FILTER – Solder Mount**

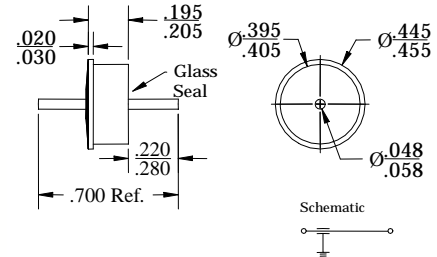
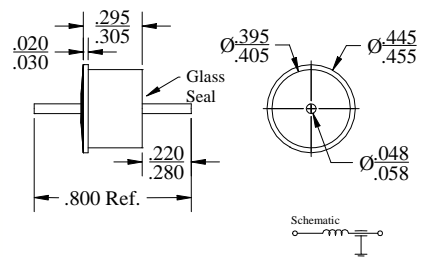


FIGURE 8

**L-SECTION FILTER - Solder Mount**



FILTER DIVISION PART NUMBER	FIG.	WORKING VOLTAGE (VDC)	MIN CAP $\mu$ F	MINIMUM INSERTION LOSS (dB) Per MIL-STD-220					
				500 KHz	1 MHz	10 MHz	100 MHz	1 GHz	10 GHz
1118-UA15-125**	7	50	1.2	33	37	52	70	70	70
1128-UA15-105**	7	70	1.0	31	40	48	64	70	70
1128-UA15-704**	7	100	.7	30	36	44	60	70	70
1128-UA15-504**	7	100	.5	26	34	42	58	70	70
1138-UA15-254**	7	200	.25	20	30	40	55	70	70
1138-UA15-154**	7	200	.15	17	24	38	50	70	70
1138-UA15-104**	7	200	.1	14	20	38	48	70	70
1148-UA15-753**	7	115 VAC	.075	12	18	37	46	70	70
1148-UA15-503**	7	115 VAC	.05	7	15	34	44	70	70
1158-UA15-403**	7	400	.04	6	12	31	43	65	70
1158-UA15-103**	7	400	.01	-	4	20	35	52	60
1218-UB15-125**	8	50	1.2	33	38	53	70	70	70
1218-UB15-105**	8	70	1.0	31	41	50	65	70	70
1228-UB15-704**	8	100	.7	30	38	46	62	70	70
1228-UB15-504**	8	100	.5	26	36	44	60	70	70
1238-UB15-254**	8	200	.25	20	30	42	56	70	70
1238-UB15-154**	8	200	.15	17	26	40	53	70	70
1238-UB15-104**	8	200	.10	14	20	39	52	70	70
1248-UB15-753**	8	115 VAC	.075	12	18	37	51	70	70
1248-UB15-503**	8	115 VAC	.05	7	15	34	50	70	70
1258-UB15-403**	8	400	.04	6	12	33	49	65	70
1258-UB15-103**	8	400	.01	-	4	20	38	65	60

**NOTE:** For glass seal at the flange end, change the first digit of the part number from 1 to 5.  
Details subject to change without notice.

**\*\* PART NUMBERS ARE INCOMPLETE. PLEASE SEE PAGE 49 TO COMPLETE THE NUMBERS.**