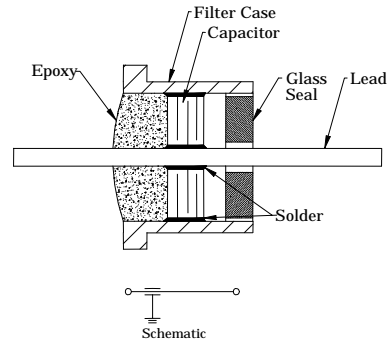


EYELET



EMI FILTERS "C" AND "L" TYPE .165 OD, 10 AMP

Hermetic Seal Eyelet C-Section Filter



FILTER DIVISION PART NUMBER	FIG.	WORKING VOLTAGE (VDC)	MIN CAP pF	MINIMUM INSERTION LOSS (dB) Per MIL-STD-220					
				500 KHz	1 MHz	10 MHz	100 MHz	1 GHz	10 GHz
1116-S415-104**	3	50	100000	14	20	38	48	70	70
1116-S415-653**	3	50	65000	10	16	35	45	70	70
1126-S415-503**	3	100	50000	8	15	33	44	67	70
1126-S415-403**	3	100	40000	5	12	31	43	65	70
1126-S415-273**	3	100	27000	-	10	30	42	65	70
1126-S415-153**	3	100	15000	-	7	25	40	60	60
1136-S415-103**	3	200	10000	-	4	20	35	52	60
1136-S415-502**	3	200	5000	-	-	15	34	50	60
1216-S715-104**	4	50	100000	14	20	38	52	70	70
1216-S715-653**	4	50	65000	10	16	36	51	70	70
1226-S715-503**	4	100	50000	8	15	34	50	70	70
1226-S715-403**	4	100	40000	5	12	33	49	65	70
1226-S715-273**	4	100	27000	-	10	30	48	65	70
1226-S715-153**	4	100	15000	-	7	25	45	60	60
1236-S715-103**	4	200	10000	-	4	20	38	55	60
1236-S715-502**	4	200	5000	-	-	15	35	55	60

FIGURE 3

C-SECTION FILTER – Solder Mount

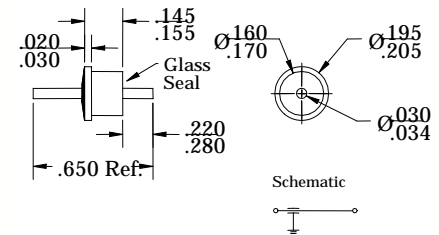
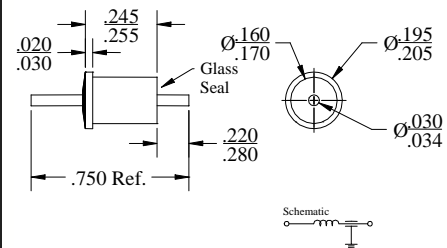


FIGURE 4

L-SECTION FILTER - Solder Mount



NOTE: For glass seal at the flange end, change the first digit of the part number from 1 to 5.
Details subject to change without notice.

** PART NUMBERS ARE INCOMPLETE. PLEASE SEE PAGE 49 TO COMPLETE THE NUMBERS.