

NOTES:

1. HERMETIC LEAK RATE: LESS THAN OR EQUAL TO  $1 \times 10^{-9}$  CC/SEC He AT 1 ATM DIFFERENTIAL PRESSURE.
2. NOMINAL IMPEDANCE: 50 OHMS.
3. INSULATION RESISTANCE: 5000 MEGOHMS MINIMUM.
4. DESIGNED TO BE LASER WELDED TO ALUMINUM ALLOY 6061 HOUSINGS.
5. MATERIALS:  
 WELD FLANGE: 4000 SERIES ALUMINUM  
 CONTACT: KOVAR IAW ASTM-F15 OR EQUIVALENT.  
 INSULATOR: 7070 CORNING GLASS OR EQUIVALENT.  
 GROUND SPRING: BeCu 173/174 IAW ASTM-B194, T004.
6. FINISH: CONTACT, BODY AND GROUND SPRING:  
 NICKEL PLATE IAW ASTM B733, TYPE I, CLASS I, OR EQUIVALENT, .000100/.000250 THICK.  
 GOLD PLATE IAW ASTM B488, TYPE III, CODE A, OR EQUIVALENT, .000050/.000150 THICK.
7. GROUND SPRING SHIPPED LOOSE AND UNATTACHED.
8. ORDERING INFORMATION:  
 PLEASE SPECIFY ACCORDING TO THE FOLLOWING:

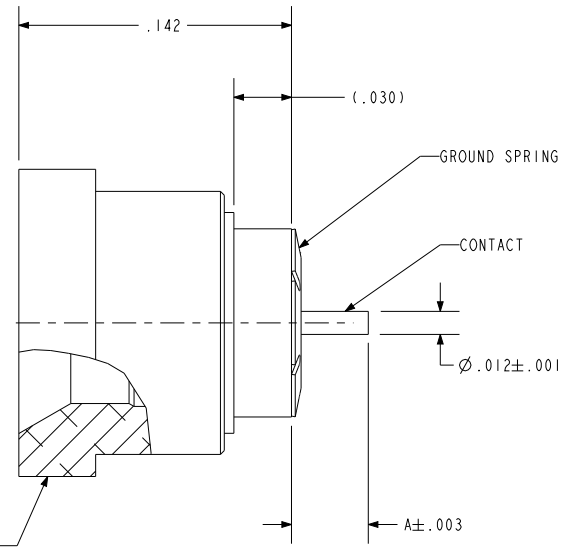
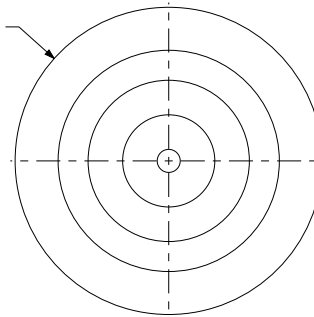
EXAMPLE: 93843 - FD - 045

A = PIN EXTENSION (.020 MIN/.120 MAX)

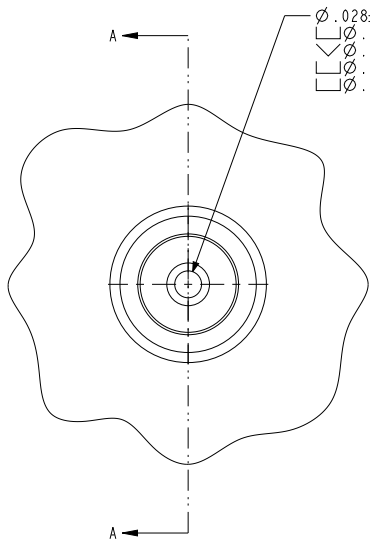
FD = FULL DETENT, ND = NO DETENT

BASE PART NUMBER

$\varnothing .160 \pm .001$



SECTION A-A

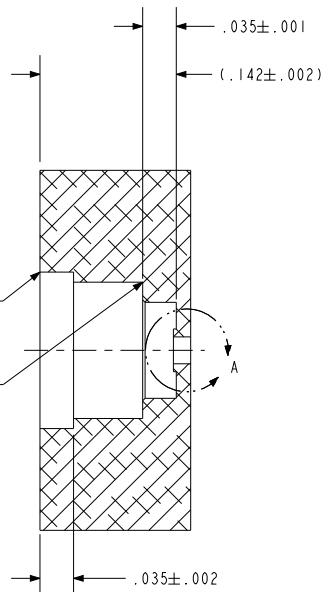


HOLE DETAIL

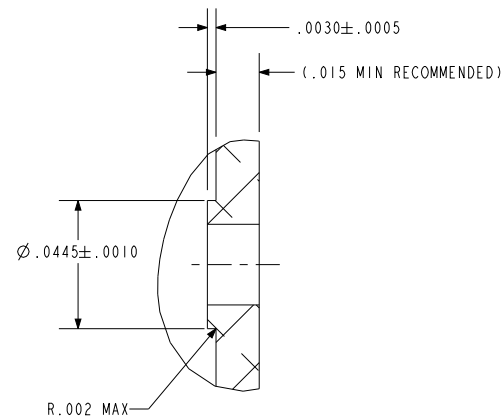
SCALE 5.000

.003 MAX EDGE BREAK

R.003 MAX



SECTION A-A



DETAIL A  
SCALE 15.000



SCALE 2.000



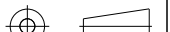
**PACIFIC AEROSPACE & ELECTRONICS, INC.**

434 Olds Station Rd. Wenatchee, Washington 98801

WWW.PACAERO.COM

TITLE:  
CONNECTOR, RF, LASER WELDABLE PUSH-ON (LLWP), HIGH PERFORMANCE,  
ALUMINUM COMPATIBLE

THIRD ANGLE PROJECTION



CAGE CODE: 64567

VERSION  
-.2

RELEASE DATE:  
01-23-07

**SALES DRAWING**

SHEET:  
1 OF 1

DOCUMENT:  
0-93843