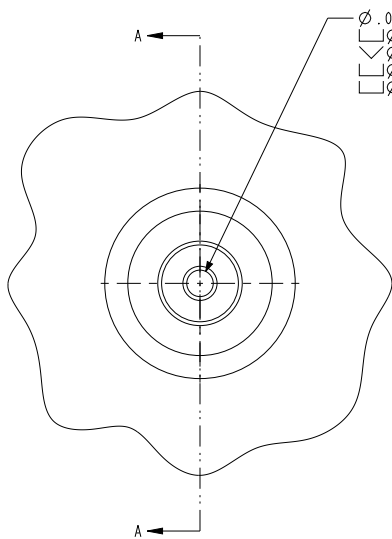
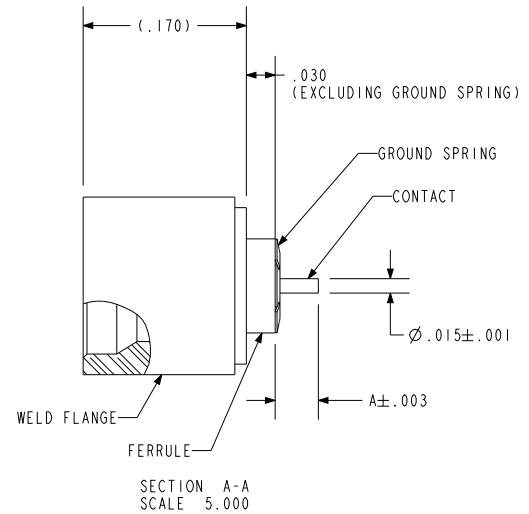
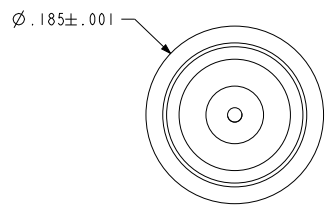
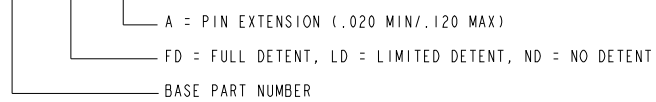


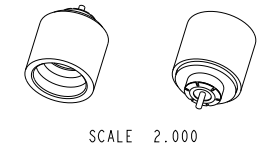
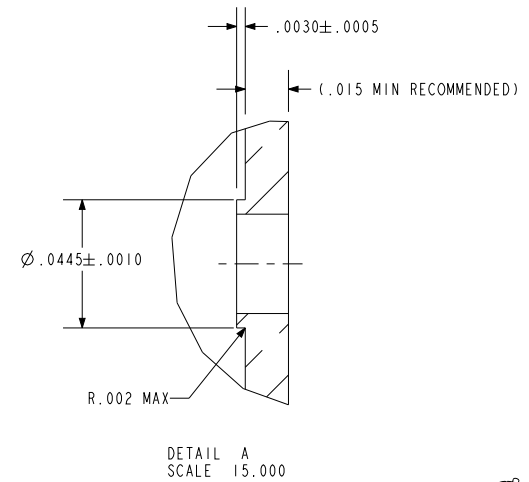
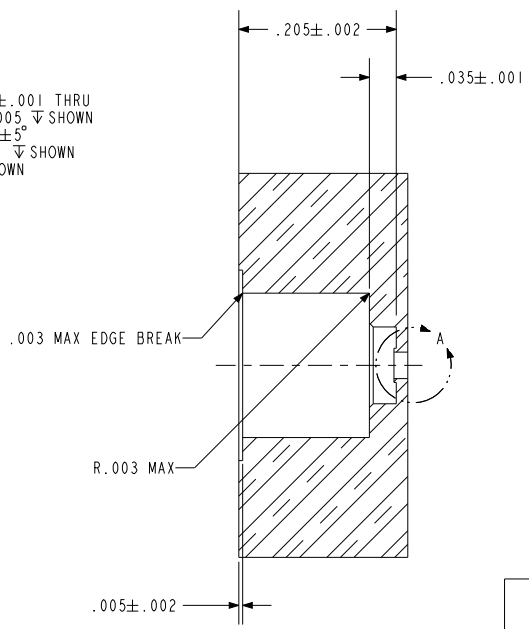
NOTES:

1. HERMETIC LEAK RATE: LESS THAN OR EQUAL TO 1×10^{-9} CC/SEC He AT 1 ATM DIFFERENTIAL PRESSURE.
2. NOMINAL IMPEDANCE: 50 OHMS.
3. INSULATION RESISTANCE: 5000 MEGOHMS MINIMUM.
4. DESIGNED TO BE LASER WELDED TO TITANIUM HOUSINGS.
5. MATERIALS:
 WELD FLANGE: EXPLOSION BONDED 304L S.S.T. IAW ASTM A240 TO GRADE 2 TITANIUM IAW ASTM-B265
 CONTACT: KOVAR IAW ASTM-F15 OR EQUIVALENT.
 INSULATOR: 7070 CORNING GLASS OR EQUIVALENT.
 GROUND SPRING: BeCu 173/174 IAW ASTM-B194, TD04.
6. FINISH: CONTACT, BODY AND GROUND SPRING:
 NICKEL PLATE IAW AMS-SAE-QQ-N-290, OR EQUIVALENT, .000100/.000250 THICK.
 GOLD PLATE IAW ASTM B488, TYPE III, CODE A, OR EQUIVALENT, .000050/.000150 THICK.
 WELD FLANGE: NONE
7. GROUND SPRING SHIPPED LOOSE AND UNATTACHED.
8. ORDERING INFORMATION:
 PLEASE SPECIFY ACCORDING TO THE FOLLOWING:

EXAMPLE: 94386 - FD - 045



HOLE DETAIL
 SCALE 4.000



<p>PACIFIC AEROSPACE & ELECTRONICS, INC. 434 Olds Station Rd. Wenatchee, Washington 98801</p>		<p>WWW.PACAERO.COM</p>	
TITLE: CONNECTOR, RF, LASER WELDABLE PUSH-ON (LWP), HIGH PERFORMANCE, TITANIUM COMPATIBLE		THIRD ANGLE PROJECTION 	
VERSION: -.0 RELEASE DATE: 04-16-09		SHEET: 1 OF 1 DOCUMENT: 0-94386	
<p>SALES DRAWING</p>		pro/ENGINEER	