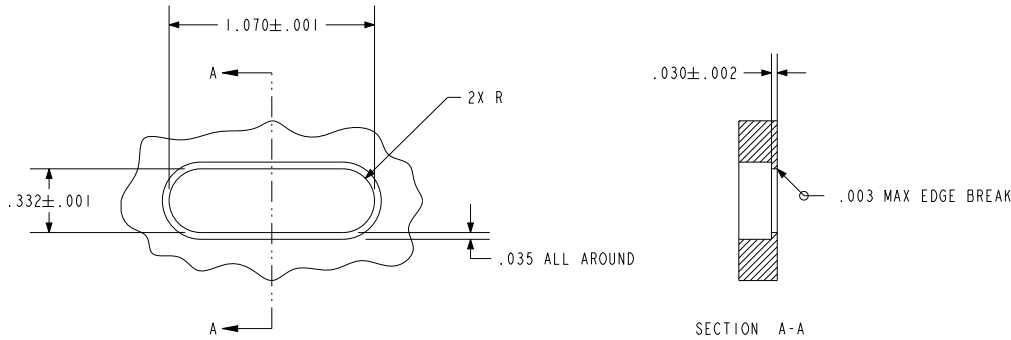
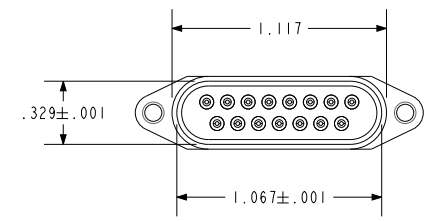
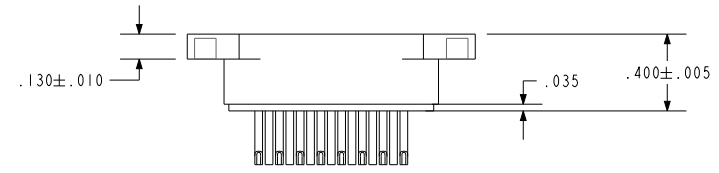
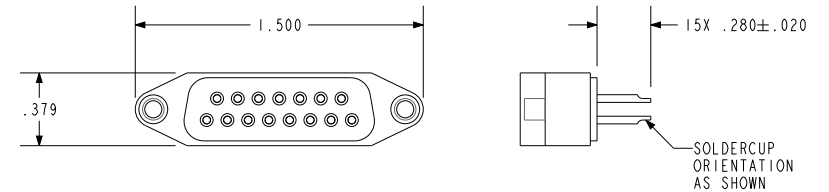
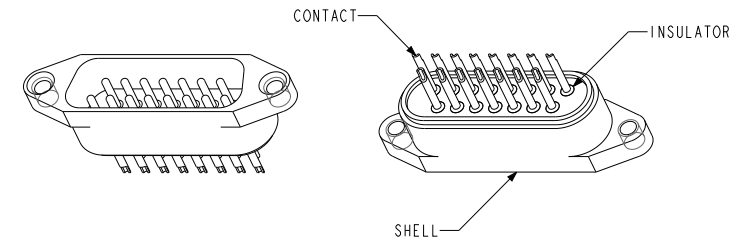
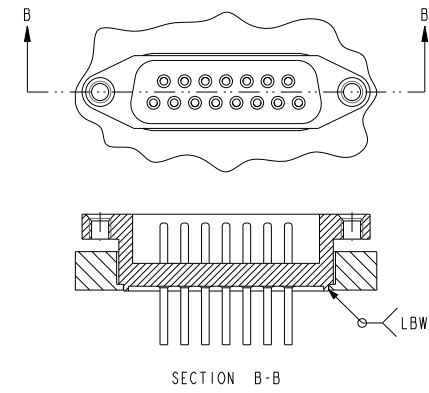



NOTES:

1. HOLES AND INTERFACE DIMENSIONS PER MIL-DTL-24308.
2. MATEABLE WITH CONNECTORS MANUFACTURED PER MIL-DTL-24308.
3. DESIGNED TO BE LASER WELDED INTO 304L S.ST. HOUSINGS.
4. HERMETIC LEAK RATE: LESS THAN OR EQUAL TO 1×10^{-9} CC/SEC H_e AT 1 ATM DIFFERENTIAL PRESSURE.
5. ELECTRICAL REQUIREMENTS:
 - INSULATION RESISTANCE: GREATER THAN 5,000 MEGOHMS AT $500 \pm 10\%$ VDC AT $25^\circ C$ WHEN TESTED IAW MIL-STD-1344, METHOD 3003, COND. B.
 - DIELECTRIC WITHSTANDING VOLTAGE: MUST SHOW NO EVIDENCE OF BREAKDOWN OR FLASHOVER WHEN SUBJECTED TO 750 VAC RMS 60Hz IAW MIL-STD-1344, METHOD 3001. DURATION OF APPLICATION TO BE 3 SEC MIN.
6. MATERIALS:
 - SHELL: 304L STAINLESS STEEL.
 - CONTACTS: BERYLLIUM-COPPER IAW ASTM B196/B197.
 - INSULATORS: KRYOFLEX 313 PROPRIETARY POLYCRYSTALLINE CERAMIC.
7. FINISH:
 - CONTACTS: ELECTROLYTIC NICKEL PLATE IAW QQ-N-290, .000100/.000250 THICK.
 - GOLD PLATE IAW ASTM B488, TYPE III, CODE A OR MIL-G-45204, TYPE III, GRADE A, .000050/.000150 THICK.
8. ORDERING INFORMATION:
 - PLEASE SPECIFY ACCORDING TO THE FOLLOWING: 93138-1



RECOMMENDED HOLE DETAIL



 PACIFIC AEROSPACE & ELECTRONICS, INC. 434 Olds Station Rd. Wenatchee, Washington 98801 WWW.PACAERO.COM	
TITLE: 15 PIN SUB-D CONNECTOR INTFC. PER MIL-DTL-24308, SIZE 2, ARRANGEMENT 1	
VERSION: B.0	RELEASE DATE: 04-17-08
SALES DRAWING	
SHEET: 1 OF 1	DOCUMENT: 0-93138