

NOTES:

- 1. HOLES AND INTERFACE DIMENSIONS PER MIL-DTL-24308.
- 2. MATEABLE WITH CONNECTORS MANUFACTURED PER MIL-DTL-24308.
- 3. DESIGNED TO BE LASER WELDED INTO ALUMINUM HOUSINGS.
- 4. HERMETIC LEAK RATE: LESS THAN OR EQUAL TO 1×10^{-9} CC/SEC He AT 1 ATM DIFFERENTIAL PRESSURE.
- 5. ELECTRICAL REQUIREMENTS:

INSULATION RESISTANCE: GREATER THAN 5,000 MEGOHMS AT $500 \pm 10\%$ VDC AT 25°C
WHEN TESTED IAW MIL-STD-1344, METHOD 3003.

DIELECTRIC WITHSTANDING VOLTAGE: MUST SHOW NO EVIDENCE OF BREAKDOWN OR FLASHOVER
WHEN SUBJECTED TO 600 VAC RMS 60Hz IAW MIL-STD-1344, METHOD 3001.
DURATION OF APPLICATION TO BE 1 SEC MIN.

6. MATERIALS:

SHELL: EXPLOSION BONDED STAINLESS STEEL TO 4XXX-SERIES ALUMINUM.
CONTACTS: BERYLLIUM-COPPER IAW ASTM B196/B197.
INSULATORS: KRYOFLEX 313 PROPRIETARY POLYCRYSTALLINE CERAMIC.
HELICAL INSERTS: 300-SERIES STAINLESS STEEL.

7. FINISH:

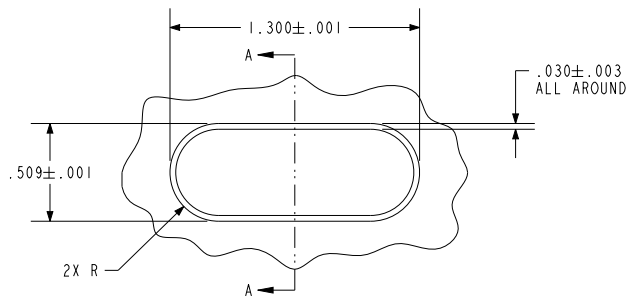
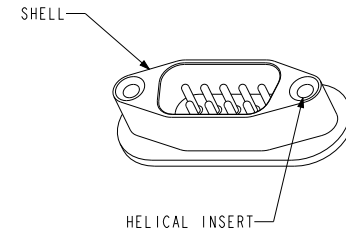
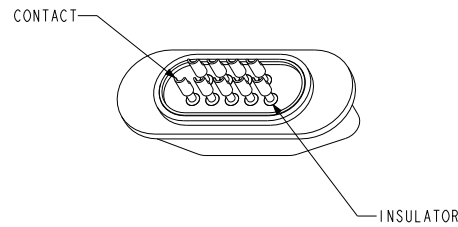
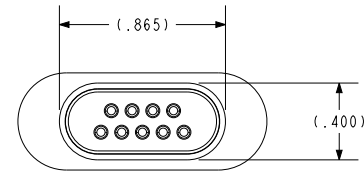
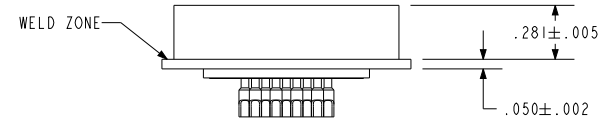
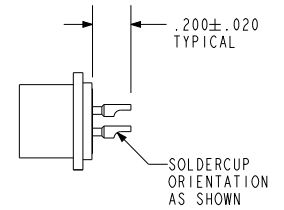
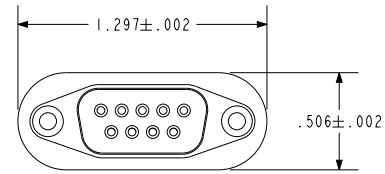
CONTACTS: ELECTROLYTIC NICKEL PLATE IAW QQ-N-290, .000100/.000250 THICK.
GOLD PLATE IAW ASTM B488, TYPE II, CODE C OR MIL-G-45204, TYPE II, GRADE C,
.000050/.000100 THICK.

SHELL: CHEMICAL CONVERSION COAT PER MIL-C-5541, CLASS IA.

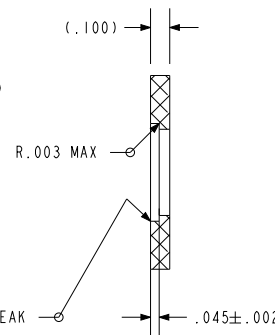
8. ORDERING INFORMATION:

PLEASE SPECIFY ACCORDING TO THE FOLLOWING: 92393-X


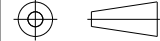
- 1 = STANDARD SOLDER CUPS
(26 TO 24 AWG)
- 2 = LARGE SOLDER CUPS
(18 AWG)



HOLE DETAIL



SECTION A-A

 PACIFIC AEROSPACE & ELECTRONICS, INC. 434 Olds Station Rd. Wenatchee, Washington 98801 WWW.PACAERO.COM	
TITLE: FLANGED AC SUB-D CONNECTOR INTFC. PER MS18272	
 THIRD ANGLE PROJECTION	
CAGE CODE: 64567	DOCUMENT: 0-92393
VERSION: D.2	RELEASE DATE: 09-29-09
SALES DRAWING	
SHEET: 1 OF 1	DOCUMENT: 0-92393