

NOTES:

1. DESIGNED TO BE LASER WELDED TO AN ALUMINUM HOUSING.
2. HERMETIC LEAK RATE: LESS THAN OR EQUAL TO  $1 \times 10^{-9}$  CC/SEC He AT 1 ATM DIFFERENTIAL PRESSURE.
3. ELECTRICAL REQUIREMENTS:

DIELECTRIC WITHSTANDING VOLTAGE: THERE SHALL BE NO EVIDENCE OF BREAKDOWN, FLASHOVER OR DETERIORATION WHEN SUBJECTED TO 250 VOLTS DC.

INSULATION RESISTANCE: SHALL BE  $\geq 100,000$  MEGOHMS AT 100 VDC.

4. MATERIALS:

SHELL: EXPLOSION BONDED STAINLESS STEEL TO 4XXX-SERIES ALUMINUM.  
 CONTACT: BERYLLIUM-COPPER.  
 INSULATOR: KRYOFLEX 313 PROPRIETARY POLYCRYSTALLINE CERAMIC.

5. FINISH:

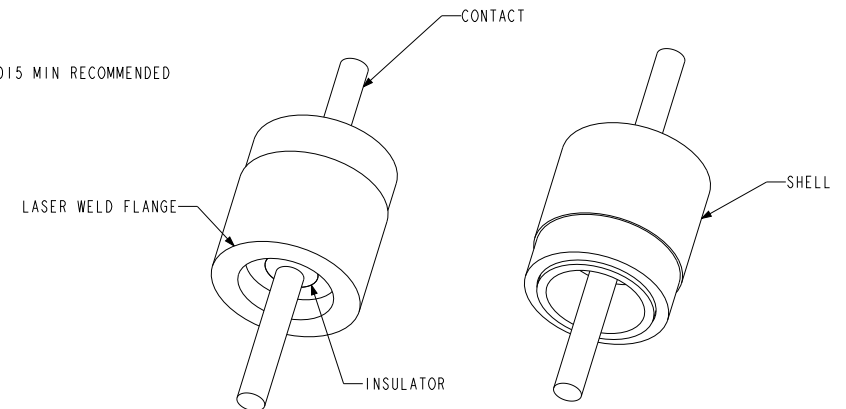
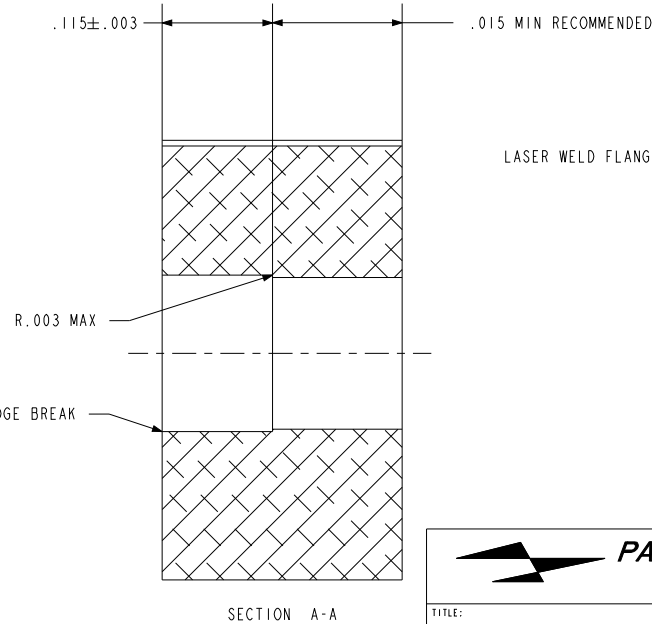
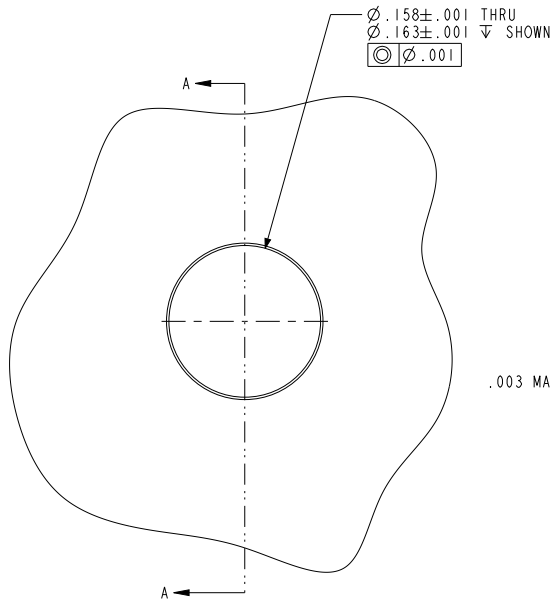
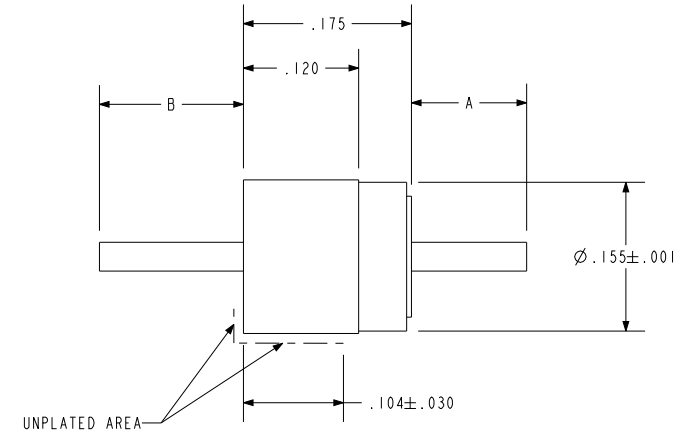
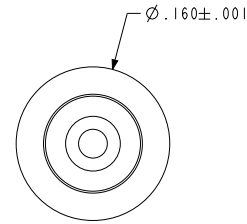
PIN, FERRULE, AND SHELL: ELECTROLYTIC NICKEL PLATE IAW QQ-N-290, .000100/.000250 THICK.  
 GOLD PLATE IAW ASTM B 488, TYPE I, CODE A, .000075/.000250 THICK.

SHELL: UNPLATED IN AREA SHOWN TO ALLOW LASER WELD.

6. ORDERING INFORMATION:

PLEASE SPECIFY ACCORDING TO THE FOLLOWING

EXAMPLE: 94268 - 120 - 150



**PACIFIC AEROSPACE & ELECTRONICS, INC.**  
 434 Olds Station Rd. Wenatchee, Washington 98801

TITLE:	FEEDTHROUGH, DC, SINGLE PIN, .030 PIN, AL-COMPATIBLE	WWW.PACAERO.COM
		THIRD ANGLE PROJECTION
		CAGE CODE: 64567

VERSION	-.0	RELEASE DATE:	01-29-08	SALES DRAWING	SHEET:	1 OF 1	DOCUMENT:	0-94268
---------	-----	---------------	----------	---------------	--------	--------	-----------	---------