

NOTES:

1. THIS DOCUMENT DESCRIBES A COMMERCIAL RELIABILITY FILTER AND FEEDTHRU DISCOIDAL CAPACITOR MANUFACTURED, SCREENED AND TESTED PER MIL-PRF-28861 EXCEPT WHERE NOTED.
2. DESIGNED TO BE LASER WELDED TO AN ALUMINUM HOUSING.
3. HERMETIC LEAK RATE: LESS THAN OR EQUAL TO 1×10^{-9} CC/SEC He AT 1 ATM DIFFERENTIAL PRESSURE.
4. ELECTRICAL REQUIREMENTS:

- A. DIELECTRIC WITHSTANDING VOLTAGE: THERE SHALL BE NO EVIDENCE OF BREAKDOWN, FLASHOVER OR DETERIORATION WHEN SUBJECTED TO 250 VOLTS DC
- B. INSULATION RESISTANCE: SHALL BE $> = 100,000$ MEGOHMS AT 100 VDC
- C. INSERTION LOSS: PER TABLE I
- D. CAPACITANCE TO GROUND: SHALL BE $6,800\text{pF}$ $\begin{matrix} +100\% \\ -0\% \end{matrix}$
- E. DC RESISTANCE: SHALL BE 0.02 OHMS MAXIMUM
- F. VOLTAGE RATING: SHALL BE 100 VDC MAXIMUM
- G. CURRENT RATING: 5 AMPERES DC ;TEMPERATURE RISE 25°C WHEN TESTED PER MIL-PRF-28861

5. VISUAL, MECHANICAL, AND ELECTRICAL TESTING SHALL BE IN ACCORDANCE WITH MIL-PRF-28861 AND TABLE I. THE REQUIREMENTS PER TABLE I TAKE PRECEDENCE OVER MIL-PRF-28861.

6. MATERIALS:

- A. SHELL: EXPLOSION BONDED STAINLESS STEEL TO 4XXX-SERIES ALUMINUM
- B. CONTACTS: BERYLLIUM-COPPER IAW ASTM B196 OR ASTM B197
- C. INSULATORS: KRYOFLEX 313 PROPRIETARY POLYCRYSTALLINE CERAMIC
- D. SOLDER: PIN TO CAP 96% Sn / 4% Ag. CAP TO CASE 80% Au / 20%
- E. EPOXY: RTV 615
- F. ENCAPSULANT: BACON P85

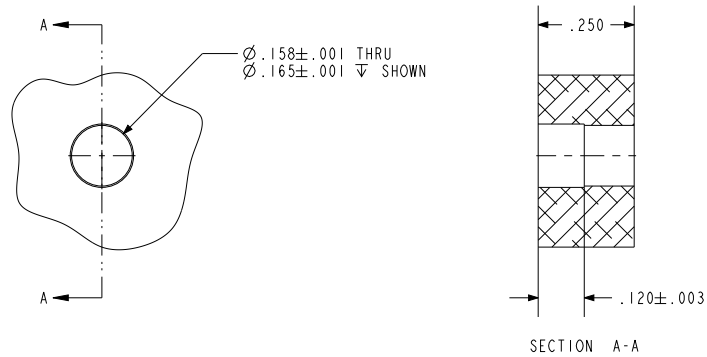
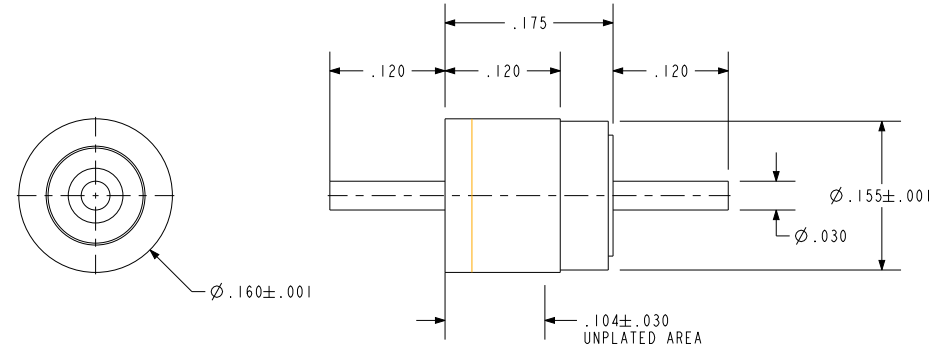
7. FINISH:

PIN, FERRULE, AND SHELL: ELECTROLYTIC NICKEL PLATE IAW QQ-N-290, .000100/.000250 THICK.
GOLD PLATE IAW ASTM B 488, TYPE I, CODE A, .000075/.000250 THICK.

SHELL: UNPLATED IN AREA SHOWN TO ALLOW LASER WELD.

8. ORDERING INFORMATION:

PLEASE SPECIFY ACCORDING TO THE FOLLOWING



RECOMMENDED HOLE DETAIL

PART NUMBER	INSULATION RESISTANCE AT +125°C	RATED DC CURRENT	MAX. DF %	CAPACITANCE (pF) +100 -000	MIN. INSERTION LOSS (db) PER MIL-STD-220			
					10 MHz	100 MHz	1 GHz	10 GHz
----	10^4 MEGOHM	5 A	2.5	6,800	18	35	57	65

NOTES:

1. L circuit insertion loss measurements shall be made under full load over the frequency range of 1 MHz to 10 MHz. Insertion loss measurements above this frequency range shall be made under no load. For C circuits insertion loss measurements shall be made under no load.
2. The insertion loss requirements between any two adjacent specified frequencies shall be made that of the lower of the two frequencies in order to accommodate resonant dips.
3. The ten (10) GHz test need not be preformed if guaranteed by the manufacturer.

PACIFIC AEROSPACE & ELECTRONICS, INC.
434 Olds Station Rd. Wenatchee, Washington 98801
WWW.PACAERO.COM

TITLE: HOLE DETAIL, FEEDTHRU, SINGLE PIN, FILTERED

THIRD ANGLE PROJECTION

CAGE CODE: 66230

SALES DRAWING

SHEET: 1 OF 1

DOCUMENT: 0-94481

VERSION: .1

RELEASE DATE: 01-04-10

ENG-014-CD1