

NOTES:

- DESIGNED TO BE LASER WELDED TO AN ALUMINUM HOUSING.
- HERMETIC LEAK RATE: LESS THAN OR EQUAL TO 1×10^{-9} CC/SEC H_2 AT 1 ATM DIFFERENTIAL PRESSURE.
- ELECTRICAL REQUIREMENTS:
 - INSULATION RESISTANCE: GREATER THAN 100 MEGOHMS AT 25°C AND GREATER THAN 1 MEGOHMS AT 125°C WHEN TESTED IAW MIL-STD-202, METHOD 302, TEST CONDITION A, TEST VOLTAGE 100 VAC, RMS 60Hz. DURATION OF TEST TO BE 5 SECONDS MINIMUM.
 - DIELECTRIC WITHSTANDING VOLTAGE: MUST SHOW NO EVIDENCE OF BREAKDOWN OR FLASHOVER WHEN SUBJECTED TO 100 VAC RMS 60Hz IAW MIL-STD-202, METHOD 301. GREATER THAN 100 MEGOHMS AT 25°C DURATION OF TEST TO BE 5 SECONDS MINIMUM.
- MATERIALS:
 - INSERT: 304L STAINLESS STEEL
 - BUSHING: EXPLOSION BONDED 300-SERIES STAINLESS STEEL TO ALUMINUM.
 - CONTACTS: BERYLLIUM-COPPER IAW ASTM B196 OR ASTM B197.
 - INSULATORS: KRYOFLEX 313 PROPRIETARY POLYCRYSTALLINE CERAMIC.
 - MALE AND FEMALE JACKSCREWS: 300-SERIES STAINLESS STEEL
- FINISH:
 - CONTACTS: ELECTROLYTIC NICKEL PLATE IAW QQ-N-290, .000100/.000250 THICK, GOLD PLATE IAW ASTM B488, TYPE III, GRADE A OR MIL-G-45204, TYPE III, GRADE A, .000050/.000200 THICK.
 - BUSHING: CHEMICAL CONVERSION COAT IAW MIL-C-5541, CLASS 1A.
- ORDERING INFORMATION:

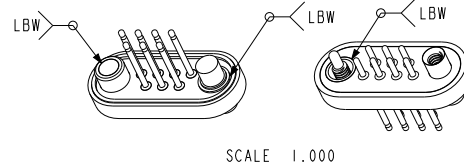
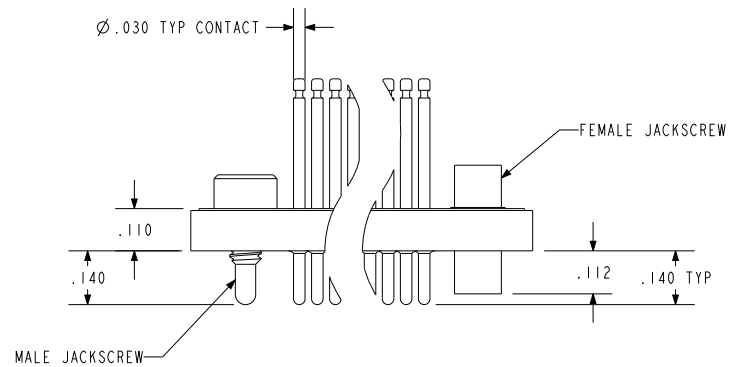
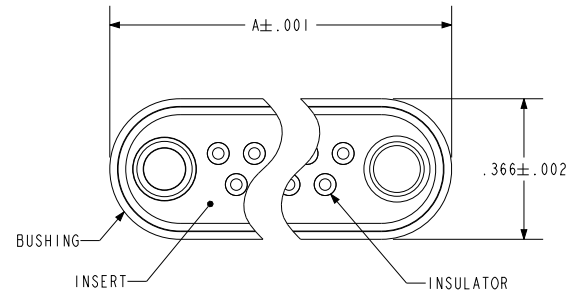
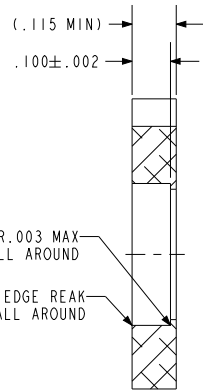
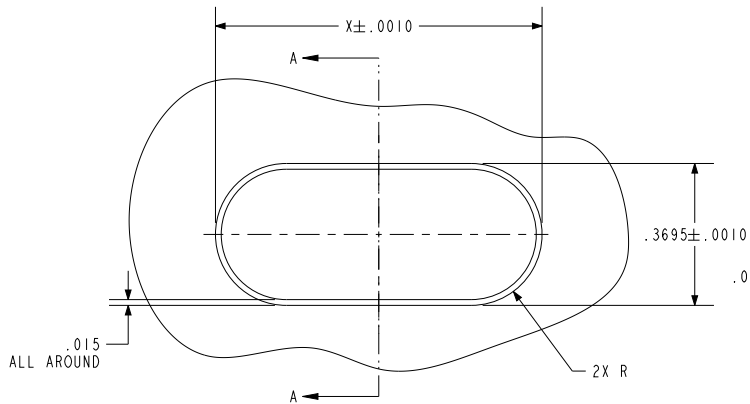
PLEASE SPECIFY ACCORDING TO THE FOLLOWING

92402 - X

BASE PART NUMBER TO ORDER

NUMBER OF CONTACTS (7, 9, 14, 20, OR 26) SEE TABLE I

NUMBER OF CONTACTS	A	X
7	.847	.8505
9	.941	.9445
14	.910	.9135
20	1.098	1.1015
26	1.285	1.2885



PACIFIC AEROSPACE & ELECTRONICS, INC.
434 Olds Station Rd. Wenatchee, Washington 98801

WWW.PACAERO.COM

TITLE: ASSEMBLY PER MIL-C-28748 WITH LASER WELDABLE RING

THIRD ANGLE PROJECTION

CAGE CODE: 64567

VERSION: K.0
RELEASE DATE: 02-20-09

SALES DRAWING

SHEET: 1 OF 1

DOCUMENT: 0-92402