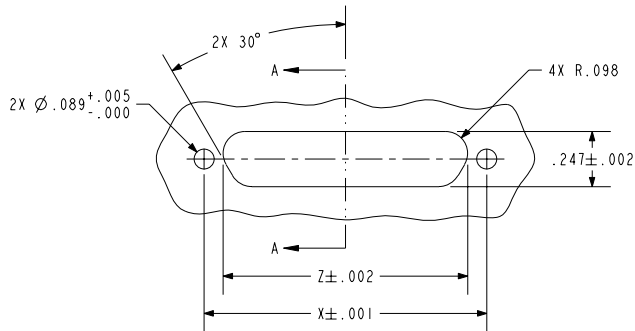
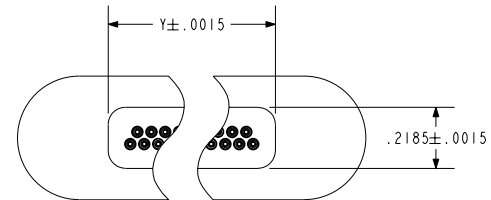
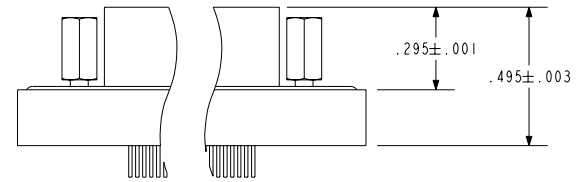
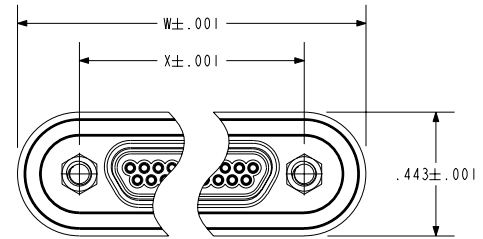


NOTES:

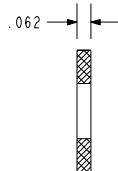
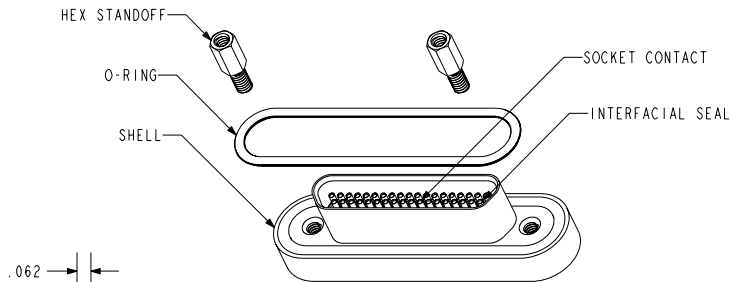
- 1. HOLES AND INTERFACE DIMENSIONS PER MIL-PRF-83513/2.
- 2. MATEABLE WITH CONNECTORS MANUFACTURED PER MIL-PRF-83513/1 AND MIL-PRF-83513/3.
- 3. DESIGNED TO BE O-RING SEALED AND FASTENED WITH HARDWARE.
- 4. HERMETIC LEAK RATE: LESS THAN OR EQUAL TO 1×10^{-8} CC/SEC He AT 1 ATM DIFFERENTIAL PRESSURE.
- 5. ELECTRICAL REQUIREMENTS:
 INSULATION RESISTANCE: GREATER THAN 5,000 MEGOHMS AT $500 \pm 10\%$ VDC AT 25°C WHEN TESTED IAW MIL-STD-1344, METHOD 3003.
 DIELECTRIC WITHSTANDING VOLTAGE: MUST SHOW NO EVIDENCE OF BREAKDOWN OR FLASHOVER WHEN SUBJECTED TO 600 VAC RMS 60Hz IAW MIL-STD-1344, METHOD 3001. DURATION OF APPLICATION TO BE 1 SEC MIN.
- 6. MATERIALS:
 SHELL: 304L STAINLESS STEEL.
 CONTACTS: BERYLLIUM-COPPER IAW ASTM B196 OR ASTM B197.
 INSULATORS: KRYOFLEX 313 PROPRIETARY POLYCRYSTALLINE CERAMIC.
 INTERFACIAL SEAL: FLUOROSILICONE RUBBER IAW MIL-R-25988, CLASS I, TYPE II, GRADE 60.
 MALE-FEMALE HEX STANDOFFS: 300-SERIES STAINLESS STEEL (SHIPPED LOOSE).
 O-RING: SILICONE OR VITON (SHIPPED LOOSE).
- 7. FINISHES:
 CONTACTS: ELECTROLYTIC NICKEL PLATE IAW QQ-N-290, .000050/.000150 THICK.
 GOLD PLATE IAW MIL-G-45204, TYPE II, GRADE C, .000050/.000100 THICK.

8. ORDERING INFORMATION:
 PLEASE SPECIFY ACCORDING TO THE FOLLOWING:

| PA&E PART NUMBER | PINS | W | X | Y | Z |
|------------------|------|-------|-------|--------|-------|
| 92595-1 | 9 | 1.008 | 0.565 | 0.3585 | 0.394 |
| 92261-1 | 15 | 1.158 | 0.715 | 0.5085 | 0.544 |
| 92350-1 | 21 | 1.308 | 0.865 | 0.6585 | 0.694 |
| 92389-1 | 25 | 1.408 | 0.965 | 0.7585 | 0.796 |
| 93832-1 | 31 | 1.558 | 1.115 | 0.9085 | 0.946 |
| 92254-1 | 37 | 1.708 | 1.265 | 1.0585 | 1.094 |



HOLE DETAIL
 SCALE 1.200
 (92254-1 SHOWN)



SECTION A-A

SCALE 1.000
 (92254-1 SHOWN)

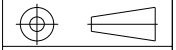
SCALE 1.000
 (92254-1 SHOWN)

PACIFIC AEROSPACE & ELECTRONICS, INC.
 434 Olds Station Rd. Wenatchee, Washington 98801

WWW.PACAERO.COM

THIRD ANGLE PROJECTION

TITLE:
 CONNECTOR, MICRO-D, O-RING, STEPPED PIN



CAGE CODE: 64567

VERSION: 07-25-05

SALES DRAWING

SHEET: 1 OF 1

DOCUMENT: 0-92254