

NOTES:

- HOLES AND INTERFACE DIMENSIONS PER MIL-PRF-83513/2.
- MATEABLE WITH CONNECTORS MANUFACTURED PER MIL-PRF-83513/1 AND MIL-PRF-83513/3.
- DESIGNED TO BE LASER WELDED TO AN ALUMINUM HOUSING.
- HERMETIC LEAK RATE: LESS THAN OR EQUAL TO 1×10^{-9} CC/SEC He AT 1 ATM DIFFERENTIAL PRESSURE.
- ELECTRICAL REQUIREMENTS:
 - INSULATION RESISTANCE: GREATER THAN 5,000 MEGOHMS AT $500 \pm 10\%$ VDC AT $25^\circ C$ WHEN TESTED IAW MIL-STD-1344, METHOD 3003.
 - DIELECTRIC WITHSTANDING VOLTAGE: MUST SHOW NO EVIDENCE OF BREAKDOWN OR FLASHOVER WHEN SUBJECTED TO 600 VAC RMS 60Hz IAW MIL-STD-1344, METHOD 3001. DURATION OF APPLICATION TO BE 1 SEC MIN.
- MATERIALS:
 - SHELL: EXPLOSION BONDED STAINLESS STEEL TO 4XXX-SERIES ALUMINUM.
 - CONTACTS: BERYLLIUM-COPPER IAW ASTM B196 OR ASTM B197.
 - INSULATORS: KRYOFLEX 313 PROPRIETARY POLYCRYSTALLINE CERAMIC.
 - INTERFACIAL SEAL: FLUOROSILICONE RUBBER IAW MIL-R-25988, CLASS I, TYPE II, GRADE 60.
 - HELICAL INSERTS: 300-SERIES STAINLESS STEEL.
- FINISH CONTACTS: ELECTROLYTIC NICKEL PLATE IAW QQ-N-290, .000100/.000200 THICK. GOLD PLATE IAW ASTM-B488, TYPE III, CODE A, .000050/.000150 THICK.
 - SHELL: CONVERSION COAT IAW MIL-C-5541, CLASS IA
- ORDERING INFORMATION:
 - PLEASE SPECIFY ACCORDING TO THE FOLLOWING

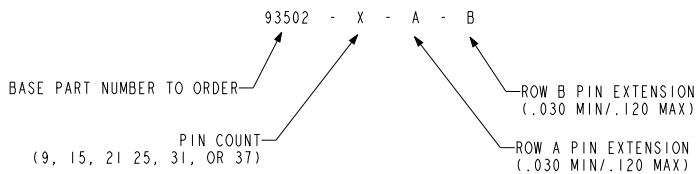
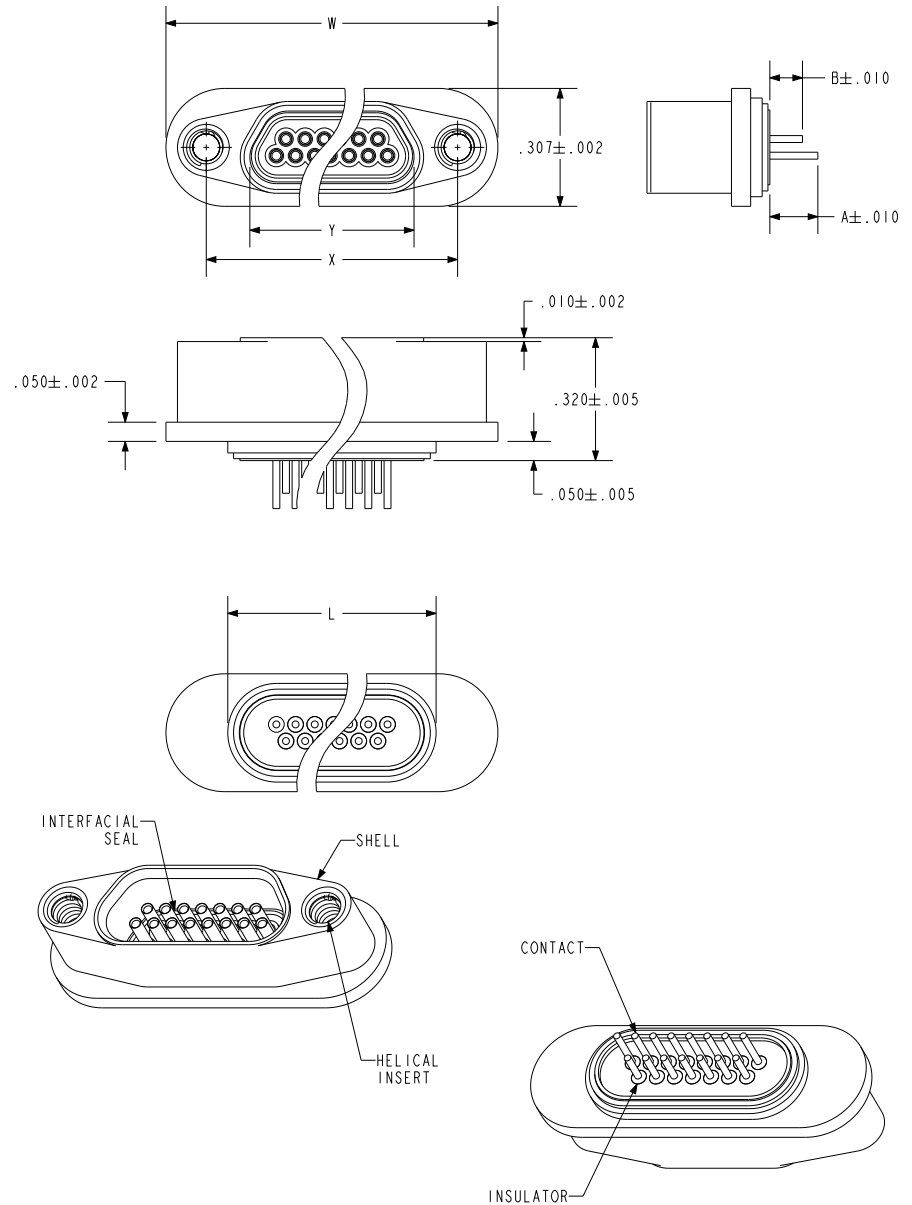
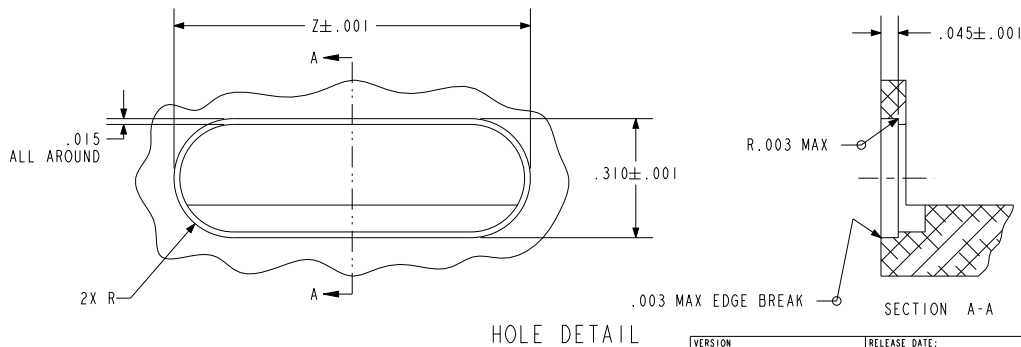


TABLE I					
NUMBER OF CONTACTS	W	X	Y	Z	L
9	.775	.565	.336	.778	.452
15	.925	.715	.486	.928	.602
21	1.075	.865	.636	1.078	.752
25	1.175	.965	.736	1.178	.852
31	1.325	1.115	.886	1.328	1.002
37	1.475	1.265	1.036	1.478	1.152



PACIFIC AEROSPACE & ELECTRONICS, INC.
 434 Olds Station Rd. Wenatchee, Washington 98801
WWW.PACAERO.COM

TITLE: CONNECTOR, MICRO-D, AL-COMPATIBLE, STD-PROFILE
 THIRD ANGLE PROJECTION
 CAGE CODE: 64567
 DOCUMENT: 0-93502

SALES DRAWING
 SHEET: 1 OF 1
 VERSION: B.0
 RELEASE DATE: 05-29-08
 pro/ENGINEER